

# META-aivi

Wearable AI Solutions



**SOLOMON**



## Empower frontline workers with Wearable AI Solutions

The recovery of global markets is presenting companies with new and exciting opportunities, but also, with new challenges. With 54% of businesses worldwide reporting a talent shortage in 2021, organizations are struggling to meet demand without sacrificing quality.

Solomon's META-aivi offers a flexible solution that helps companies increase their operational efficiency, reduce frontline errors and time spent on every task by combining the benefits of human dexterity and intelligent machine vision.

META-aivi is an affordable and easy-to-implement solution that bridges the gap between skilled and unskilled workers. Through a powerful AR wearable device, your operators can upskill, troubleshoot different workstations, and execute day-to-day tasks with newfound ease and efficiency.

**Using deep learning technology, Solomon META-aivi glasses can help you optimize a wide range of operational processes.**



### Validation

Confirm your staff properly follows the operational guidelines.

- Machine setting
- Cable wiring



### Counting

Perform instant machine recognition for accurate and fast counting.

- Parts inventory audit
- Kitting for assembly



### Identification / Classification

Assure items are correctly placed and organized.

- Content checking before shipment
- Simple retail checkout
- Fruit categorization



### Inspection

Identify defects on objects that are difficult to inspect using a fully automated line.

- Low-volume high-mix production
- Multi-sided objects applications

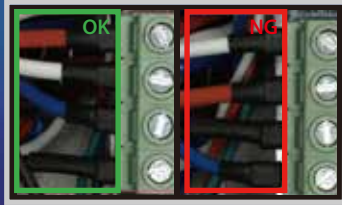


### Optical Character Recognition

Save time when identifying and recording characters.

- Meter reading
- Part number identification
- Misprinted labels

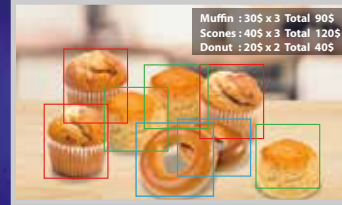




Validation



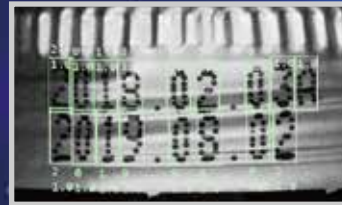
Counting



Identification / Classification



Inspection



Optical Character Recognition



## Benefits

- Reduced human error
- Increased frontline throughput
- Lower cost and risk than factory automation
- Easy to implement
- Reliable machine vision combined with human dexterity
- Suitable for skilled and unskilled workers
- Accelerated new staff training

## Key Features

- Easy-to-use AI annotation tools
- Only few image samples required
- Livestream video or snapshots image recognition
- Fast recognition results
- Command through voice recognition



Visit our product page

## Industries



Logistics



Manufacturing



Healthcare



Welding



Metal Work



Consumer Goods



Panel Building



Automotive

## Hardware Requirements

Type of H/W Support	2D AR Glasses (RealWear HMT-1/Navigator 500)
Inferencing IPC	OS: Ubuntu 20.04.3 LTS (Desktop Version) CPU: Min. Intel Core i5 / Recommended: Intel Core i7 GPU: Min. NVIDIA GeForce RTX 3070 (RAM: 8GB) RAM: Min. 16 GB / Recommended: 32 GB
Training IPC	OS: Windows 10 (64 bit) CPU: Min. Intel Core i5 / Recommended: Intel Core i7 GPU: Min. NVIDIA GeForce RTX 3070 (RAM: 8GB) / Recommended: NVIDIA GeForce RTX 3080 Ti RAM: Min. 16 GB / Recommended: 32 GB
Wireless connection supported	4G LTE, 5G, WiFi 6

## AR Glasses Specifications

RealWear	RealWear HMT-1	RealWear NAVIGATOR 500
Camera	16 MP, 1080p60 video	48 MP, 1080p60 video
Audio	4 built-in microphones	
Supported Languages	English, Chinese, Spanish, Italian, German, Japanese, Portuguese, Russian, Korean, Thai, Polish, French	

### Taiwan (HQ)

No. 42, Sing Zhong Rd., Nei Hu Dist., Taipei 11494, Taiwan  
Tel : +886 2 8791 8989

### USA

727 Brea Canyon Rd, Unit 15, Walnut CA 91789  
Tel : +1 626 388 4061

### Shanghai

Room 1A, Block 2, Hongqiao Headquarters No.1, No. 100 Zixiu Road,  
Minhang District, Shanghai  
Tel : +86 21 5956 8315

### Shenzhen

1604, Block C, 2001 Shennan Avenue, Futian District, Shenzhen  
Tel : + 86 755 8209 6916

✉ [inquiry@solomon-3D.com](mailto:inquiry@solomon-3D.com)

🌐 <https://www.solomon-3D.com>



**AccuPick**

reddot winner 2020  
best of the best interface design

